

Universität Osnabrück
Visiting the Institut für Mathematik
Staying at Intour Hotel or Hotel Klute

Directions from the Hauptbahnhof to Intour Hotel (Maschstraße 10) or Hotel Klute (Lotter Straße 30).

By bus

1. From the Hauptbahnhof, take the bus 31 or 33 in the direction Heger Friedhof or Attersee.
2. Get off at the stop Weißenburger Straße (6 stops).
- 3i. To Intour Hotel: Continue walking on Lotter Straße three more blocks. Turn left on Maschstraße. The hotel will be on your right.
- 3k. To Hotel Klute: Continue walking on Lotter Straße two more blocks. The hotel will be on your left, at the corner of Adolfstraße.

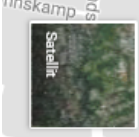
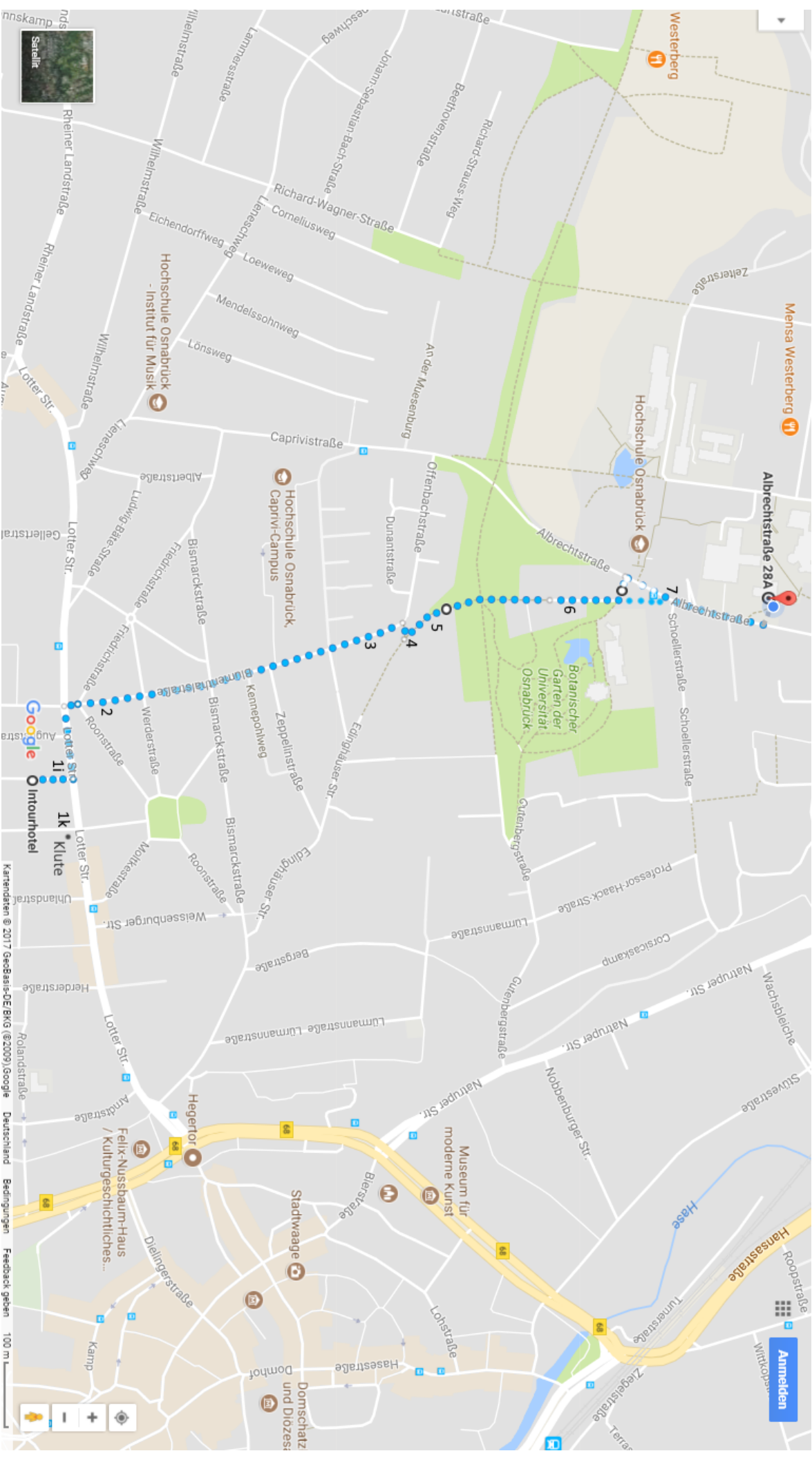
Directions from Intour Hotel (Maschstraße 10) or Hotel Klute (Lotter Straße 30) to the Institut für Mathematik (Albrechtstraße 28a).

Walking (recommended)

- 1i. From Intour Hotel: As you leave the hotel onto Maschstraße, go left (heading north). Turn left on Lotter Straße.
- 1k. From Hotel Klute: As you leave the hotel onto Lotter Straße, go left (heading west).
2. Turn right on Blumenthalstraße, which will be the next traffic light. Ignore the diagonal streets going off to each side; it's a 90° right turn.
3. Walk on Blumenthalstraße (uphill) all the way to the end of the street. You'll see big recycling containers for glass.
4. Hook right by a few meters onto the pedestrian path.
5. There will be a fork in front of you. Keep right at the fork.
6. Walk straight ahead for a few minutes. You'll exit the park area onto a small residential street, then pass the Botanischer Garten on your right, and reach Albrechtstraße, with the bus stop just on your left.
7. Cross Albrechtstraße. The math building is NOT the big building in front of you with the grayish dark yellow windows, but rather the next building, smaller, half hidden behind trees, with bright yellow window sills. It's building 69.

Warning: Google Maps does not know about some of the pedestrian paths. Here are the manually adjusted walking directions:

<https://goo.gl/maps/VQzPs5Art962>



Google
Intourhotel

1
Klute

2
Klute

3
Klute

4
Klute

5
Klute

6
Klute

7
Klute

8
Klute

9
Klute

10
Klute

11
Klute

12
Klute

13
Klute

14
Klute

15
Klute

16
Klute

17
Klute

18
Klute

19
Klute

20
Klute

21
Klute

By bus (not recommended)

1. Follow step #1 of the walking directions.
2. Cross Blumenthalstraße (the next traffic light), and walk a bit farther to the bus stop Hans-Calmeyer-Platz, on the right side of the street (i.e., still heading west).
3. Take the bus 21 or 22; the direction should be Atterfeld or Campus Westerberg.
4. Get off at the stop Hochschulen Westerberg / Botanischer Garten (3 stops).
5. Follow step #7 of the walking directions.